

Airpot Coffee Brewer

Features

Airpot Coffee Brewer

- Brews 3.8 to 7.5 gallons (14.4 to 28.4 litres) of perfect coffee per hour.
- Brews directly into 1.9 to 3 litre airpots.
- Convenient airpots keep coffee hot and fresh for hours.
- Airpots are easily transported to remote meeting rooms, breakfast bars, etc.
- Pourover model available (CW15-APS).
- Pourover feature included on automatic models.
- Faucet available on CWTF models only.
- Gourmet funnel model available for use with heavier throw weights of coffee.
- Digital timer enables users to make brew cycle adjustments from the front panel.
- International electrical configurations available.



Model CWTF APS with Airpot *

(airpot sold separately)
Dimensions: 23.6" H x 9" W x 18.5" D
(59.9cm H x 22.9cm W x 47cm D)



Model CW15-APS with Airpot *

(airpot sold separately)
Dimensions: 23.6" H x 9" W x 18.5" D
(59.9cm H x 22.9cm W x 47cm D)

For current specification sheets and other information, go to www.bunn.com.

* International models may vary in appearance.

Related Products

Easy Clear® EQ-17-TL

Product No. : 30200.1000
Dimensions:
12⁷/₁₆" H x 2¹/₂" W x 3" D
31.6 cm H x 6.35 cm W x 7.62 cm D



Easy Clear® ED-17-TL

Product No. : 30201.1001
Dimensions: 8¹/₄" H x 2⁵/₁₆" Dia.
20.95 cm H x 5.87 cm Dia.

Paper Filter Pack

Product No. : 20115.0000
Packed per case: 1,000
Dimensions: 4¹/₄" Base x 2³/₄" Sidewall
10.8 cm Base x 6.98 cm Sidewall



2.2 litre Push-Button Airpot

Product No. : 28696.0002
Capacity: 74 oz. (2.19 L)



2.5 litre Push-Button Airpot

Product No. : 13041.0001
Capacity: 84 oz. (2.48 L)

2.5 litre Lever-Action Airpot

Product No. : 32125.0000
Capacity: 84 oz. (2.48 L)

3.0 litre Lever-Action Airpot

Product No. : 32130.0000
Capacity: 102 oz. (3.0 L)



Universal Airpot Racks

for push-button and lever-action airpots.
See page A3.9 for more information.



Gourmet C Funnel

Product No.: 34559.0000 (7.12 inch width)
34559.0001 (7.62 inch width)

- Universal design— handle may be moved to appropriate side
- Allows brewing with heavier throw weights of coffee.
- Paper Filter Pack
Product No. : 20100.0000
Packed per case: 1,000



Model

Agency Listing

CW APS
CWT APS
CWTF APS



Dimensions & Specifications

Model	Product #	Volts	Amps	Tank Heater Watts	Total Watts	Brewing Capacity	Cubic Ft.	Shipping Weight	Cord Attached
CW15-APS*	23001.0000	120	11.4	1320	1370	3.8 gal./hr.	5.0	28 lbs.	Yes†
CW15-APS***	23001.0062	120	11.4	1320	1370	3.8 gal./hr.	5.0	28 lbs.	Yes†
CWT15-APS	23001.0003	120	11.4	1320	1370	3.8 gal./hr.	5.0	29 lbs.	Yes†
CWTF15-APS**	23001.0017	120	11.4	1320	1370	3.8 gal./hr.	5.1	38 lbs.	Yes†
CWTF15-APS	23001.0006	120	11	1320	1370	3.8 gal./hr.	5.0	33 lbs.	Yes†
CWTF15-APS***	23001.0051	120	11.4	1320	1370	3.8 gal./hr.	5.2	37 lbs.	Yes†
CWTF20-APS	23001.0007	120	15.4	1800	1850	5.1 gal./hr.	5.0	32 lbs.	No
CWTF35-APS	23001.0008	120/208-240	15	3500	3550	7.5 gal./hr.	5.0	33 lbs.	No
CWTF35-APS**	23001.0023	120/208-240	15	3500	3550	7.5 gal./hr.	5.0	33 lbs.	No
CWTF35-APS***	23001.0052	120/208-240	15	3500	3550	7.5 gal./hr.	5.2	37 lbs.	No

*Pourover model. **Stainless steel funnel. ***Model has gourmet funnel. †Power cord (NEMA 5-15P) 15 Amp-120V machine only.

Brewing capacity: based upon incoming water temp of 60°F/15°C (140°F/60°C rise) per 1/2 gallon brew time of 4 minutes.

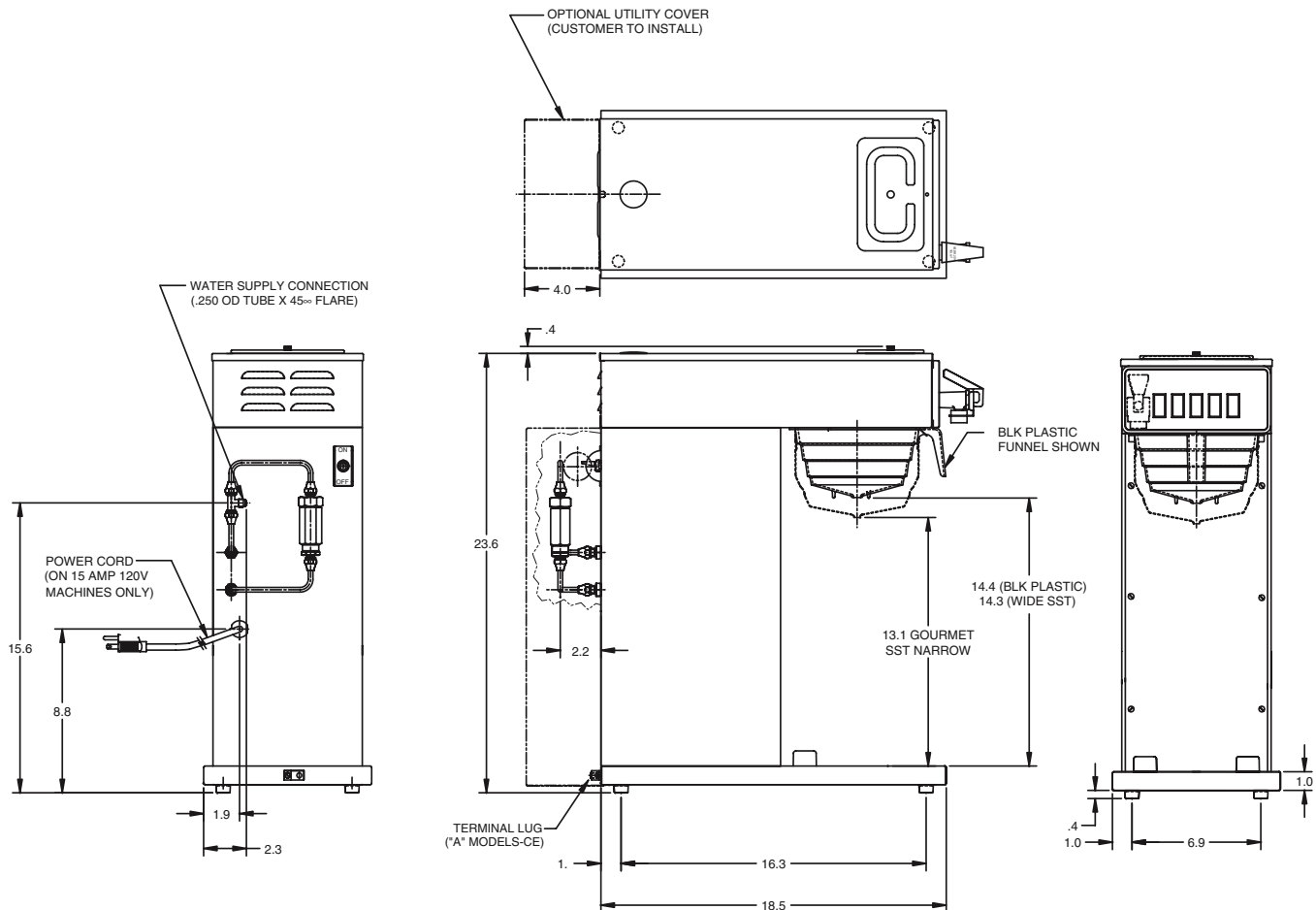
Models listed as 120/208V or 120/240V must be connected to 208V or 240V electrical service respectively. Please refer to the installation manual.

Electrical: CW15-APS, CWT15-APS & CWTF15-APS - require 2-wires plus ground service rated 120V, single phase, 60Hz.

CWTF20-APS - requires 2-wires plus ground service rated 120V, single phase, 60Hz.

CWT35-APS and CWTF35-APS - require 3-wires plus ground service rated 120/240V, single phase, 60Hz.

Plumbing: 20-90 psi (138-621 kPa). Supplied with 1/4" (6.4 mm) male flare fitting.



BUNN Corporation - 1400 Stevenson Drive Springfield, Illinois 62703 • 800-637-8606 • 217-529-6601 • Fax 217-529-6644 • www.bunn.com

BUNN® practices continuous product research and improvement. We reserve the right to change specifications and product design without notice. Such revisions do not entitle the buyer to corresponding changes, improvements, additions or replacements for previously purchased equipment.

All dimensions shown in inches. Bunn Corporation owns all copyrights relating to materials in this publication. Please contact Bunn Corporation to request permission to reproduce any portion of this publication.